

(9)

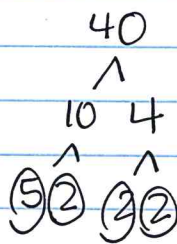
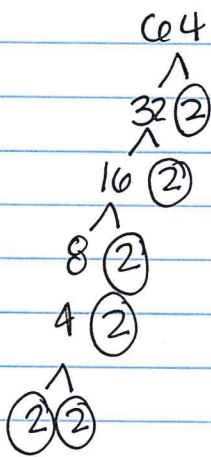
GCF

GCF: The largest number that is a factor of two or more numbers

$$\text{GCF}(40, 64) = \boxed{8}$$

64: 1, 2, 4, 8, 16, 32, 64

40: 1, 2, 4, 5, 8, 10, 20, 40

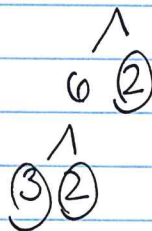
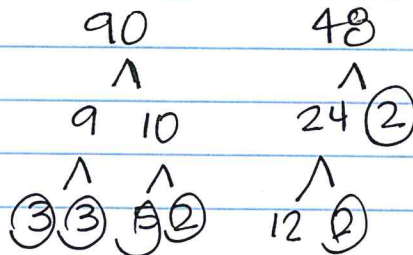
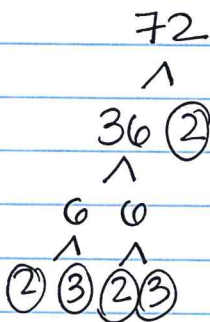


$$2 \cdot 2 \cdot 2 = \boxed{8}$$

$$\boxed{2 \cdot 2 \cdot 2} \cdot 2 \cdot 2 \cdot 2 = 64$$

$$5 \cdot 2 \cdot 2 \cdot 2 = 40$$

$$\text{GCF}(72, 90, 48) = 2 \cdot 3 = \boxed{6}$$



$$2 \cdot 2 \cdot \boxed{2 \cdot 3} \cdot 3 = 72$$

$$2 \cdot 3 \cdot \boxed{3 \cdot 5} = 90$$

$$2 \cdot 2 \cdot 2 \cdot \boxed{2 \cdot 3} = 48$$