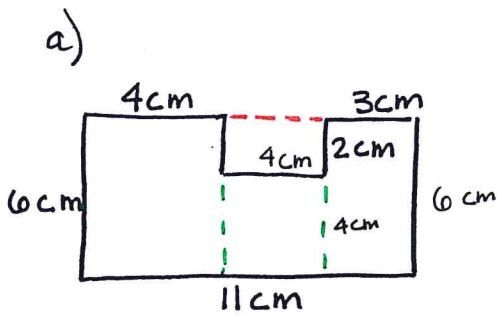


Chapter 2 Study Session

① Find the area of each figure below in 2 ways. One using addition and one using subtraction.

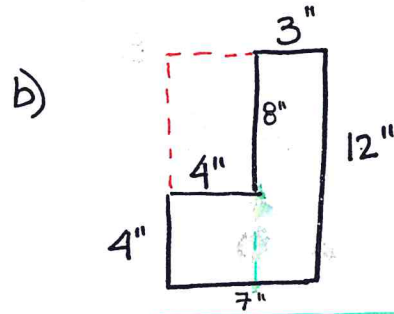


Addition Method

$$\begin{array}{r} 4 \cdot 6 = 24 \\ 3 \cdot 6 = 18 \\ + 4 \cdot 4 = 16 \\ \hline 58 \text{ cm}^2 \end{array}$$

Subtraction Method

$$\begin{array}{r} 11 \cdot 6 = 66 \\ - 4 \cdot 2 = 8 \\ \hline 58 \text{ cm}^2 \end{array}$$



Addition Method

$$\begin{array}{r} 4 \cdot 4 = 16 \\ 3 \cdot 8 = 24 \\ \hline 52 \text{ sq}'' \end{array}$$

Subtraction Method:

$$\begin{array}{r} 7 \cdot 12 = 84 \\ - 4 \cdot 8 = 32 \\ \hline 52 \text{ sq}'' \end{array}$$

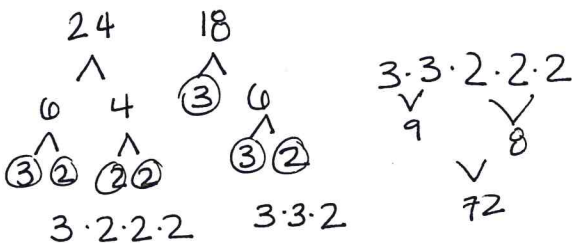
② a) $16.2 + 14.35 = 30.55$

$$\begin{array}{r} 16.2 \\ 14.35 \\ \hline 30.55 \end{array}$$

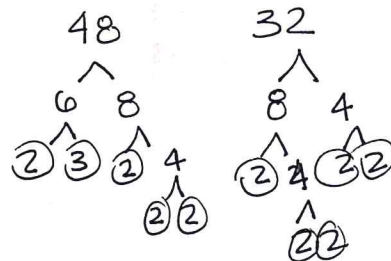
b) $20 - 8.236$

$$\begin{array}{r} 20.000 \\ - 8.236 \\ \hline 11.764 \end{array}$$

③ a) $\text{LCM}(24, 18) = 72$



b) $\text{GCF}(48, 32) = 16$



④ Use the data set below to create a histogram and stem and leaf plot. Use groups of tens for the bins in the histogram.

Data Set: 1, 3, 5, 7, 15, 18, 18, 18, 19, 23, 27, 40

0	1 3 5 7
1	5 8 8 8 9
2	3 7
3	
4	0

Key: 4|0 means 40

